

Assembling Manual

for

Pcr-1000 ICOM and RX-320 TEN_TEC





Inside the parcel



Inside parcel



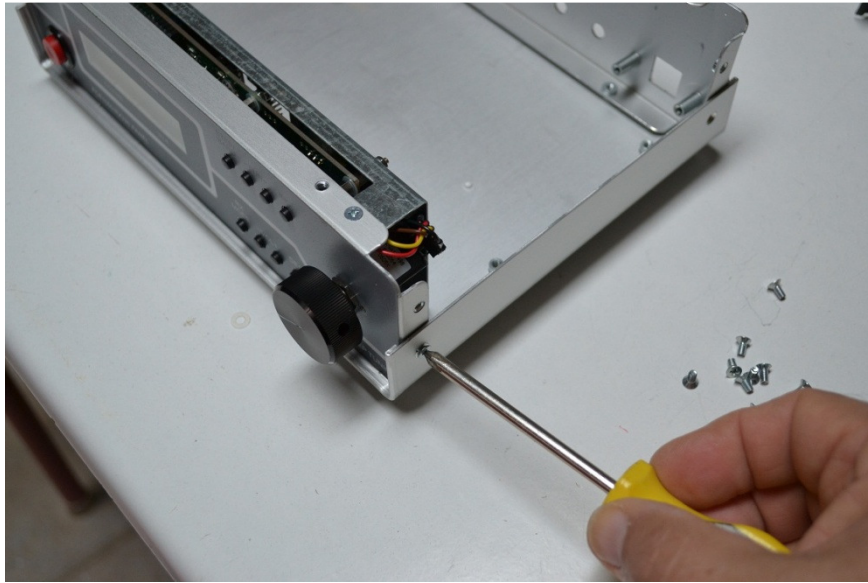
All kit components



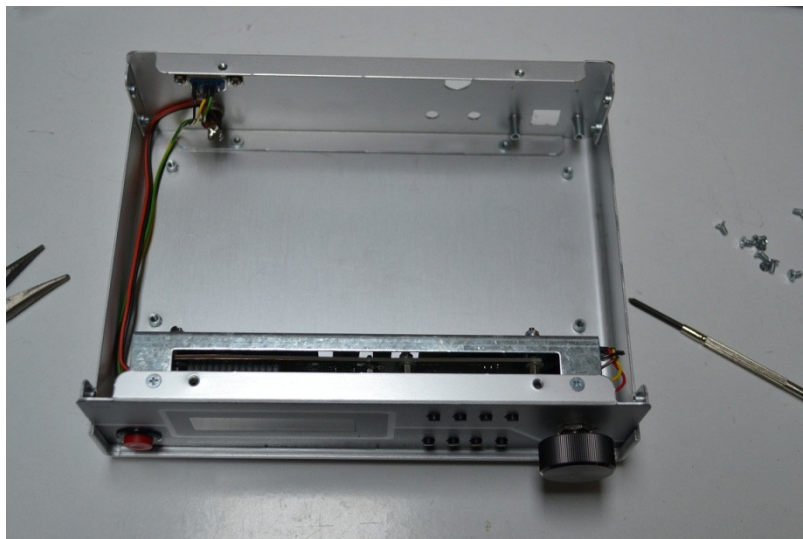
Remove the protective film on the top and bottom cover



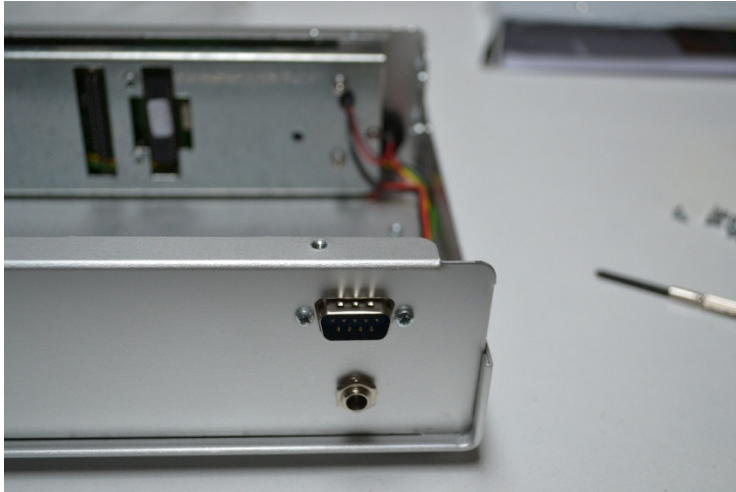
Insert spacers



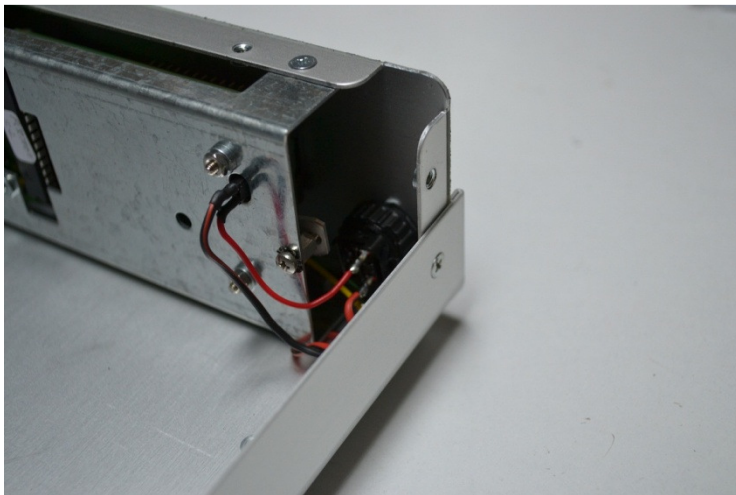
Install 4 screw for front and rear panel



Front and rear assembled



RS232 and power connectors on the rear panel



Power panel internal connections



Install all 16 screw



Assembly ready



Rear connections



Kit now working