

**WeFax for Windows**  
**Kantronics TNCs**  
**Version 2.0**

**Creative Services Software, Inc.**  
**<http://www.cssincorp.com/>**

Creative Services Software, Inc.  
503 West State Street, Suite 4  
Muscle Shoals, AL 35661  
USA

Phone: 256-381-6100  
Fax: 256-381-6121

# Contents

<b>WeFax for Windows for Kantronics TNCS .....</b>	<b>1</b>
<b>Welcome to WeFax for Windows .....</b>	<b>1</b>
<b>Introduction to WeFax for Windows .....</b>	<b>1</b>
<b>Installation of WeFax for Windows .....</b>	<b>1</b>
<b>Starting WeFax for Windows .....</b>	<b>2</b>
<b>The WeFax Window .....</b>	<b>4</b>
<b>Demo Mode .....</b>	<b>5</b>
<b>What is a WeFax .....</b>	<b>6</b>
<b>Tuning the Radio .....</b>	<b>7</b>
<b>Kantronic's TNCs and WeFax .....</b>	<b>8</b>
<b>Tech Support .....</b>	<b>9</b>
<b>WeFax for Windows Menus .....</b>	<b>10</b>
<b>File Menu .....</b>	<b>10</b>
<i>File Menu Options .....</i>	<i>10</i>
<i>New .....</i>	<i>10</i>
<i>Open.....</i>	<i>10</i>
<i>Save.....</i>	<i>11</i>
<i>Print .....</i>	<i>11</i>
<i>Settings.....</i>	<i>11</i>
<i>Communication Settings .....</i>	<i>12</i>
<i>WeFax Settings.....</i>	<i>13</i>
<i>Option Settings .....</i>	<i>14</i>
<i>Send .....</i>	<i>14</i>
<i>Exit.....</i>	<i>15</i>
<b>Edit Menu .....</b>	<b>15</b>
<i>Edit Menu Options.....</i>	<i>15</i>
<i>Undo .....</i>	<i>15</i>
<i>Cut .....</i>	<i>16</i>
<i>Copy.....</i>	<i>16</i>
<i>Paste .....</i>	<i>16</i>
<b>View Menu .....</b>	<b>17</b>
<i>View Menu Options .....</i>	<i>17</i>
<i>Toolbar.....</i>	<i>17</i>
<i>Status Bar.....</i>	<i>18</i>
<i>Return to Terminal Mode on Exit .....</i>	<i>19</i>
<b>Tools Menu .....</b>	<b>19</b>
<i>Tools Menu Options .....</i>	<i>19</i>
<i>Fax Scheduler .....</i>	<i>19</i>
<i>Image Viewer .....</i>	<i>21</i>
<b>WeFax Menu .....</b>	<b>22</b>
<i>WeFax Menu Options .....</i>	<i>22</i>
<i>Start WeFax.....</i>	<i>22</i>
<i>Pause WeFax.....</i>	<i>22</i>

<i>Sync</i> .....	23
<i>Lines to skip</i> .....	24
<b>Color Menu</b> .....	<b>24</b>
<i>Color Menu Options</i> .....	24
<i>Background Color</i> .....	24
<i>Foreground Color</i> .....	25
<i>Invert Colors</i> .....	26
<b>Help Menu</b> .....	<b>26</b>
<i>Help Menu Options</i> .....	26
<i>Help Topics</i> .....	27
<i>Ordering Information</i> .....	27
<i>Registration</i> .....	28
<i>About WeFax for Windows</i> .....	28
<b>Index</b> .....	<b>30</b>

# WeFax for Windows for Kantronics TNCs

## Welcome to WeFax for Windows

Welcome to WeFax for Windows, the industry's benchmark in Weather Facsimile download software. WeFax for Windows is a stand-alone application operating on the Windows '95, Windows '98, Windows ME, Windows NT, Windows 2000, and Windows XP operating platforms. Its purpose is to receive weather maps, transmitted by various shore stations around the world, and pass them on to you. WeFax for Windows is the only weather fax program on the market that supports the Windows operating systems discussed above. It is due to this fact that you will find WeFax for Windows graphically oriented and easy to use. We at Creative Services Software would once again like to thank you for your purchase.

Introduction to WeFax for Windows

Installation of WeFax for Windows

Starting WeFax for Windows

Technical Support

## Introduction to WeFax for Windows

WeFax for Windows requires several pieces of equipment for effective operation:

At least a short wave receiver capable of receiving Single Side Band (SSB) transmissions. The better you select your radio, the better the quality of the received transmission.


- 1) A personal computer capable of supporting Windows '95, Windows '98, Windows ME, Windows NT, Windows 2000, and Windows XP.
- 2) Version 5.0 firmware or better for the KPC series or version 7 or better for the KAM series of Kantronics TNCs. The following TNCs support WeFax Mode: **KAM E, KPC-1, KPC-2, KPC-3, KPC-4, KAM Plus, KAM 98, KAM XL, and the KPC-2400.**

## Installation of WeFax for Windows

If you received a CD:

- 1) Insert the CD into your CD drive, and wait for the AutoRun program to start.
- 2) Follow the instructions on the screen to install WeFax for Windows for Kantronics TNCs.

If you received diskettes:

- 3) Insert Disk one of your WeFax for Windows installation set into your 3.5" disk drive.
- 4) Once you have completed step one, click on the Start button.  This button is typically located in the bottom left hand corner of your screen.
- 5) Select the Run option from the Start menu, then type: '**A:\ setup.exe**' in the area of the Run box labeled **Open**. After this step is completed click the OK button displayed in the bottom of the Run box.



- 6) The computer will begin the installation procedure after completion of step Three. Follow any instructions the computer gives you in order to complete the installation process.

## Starting WeFax for Windows

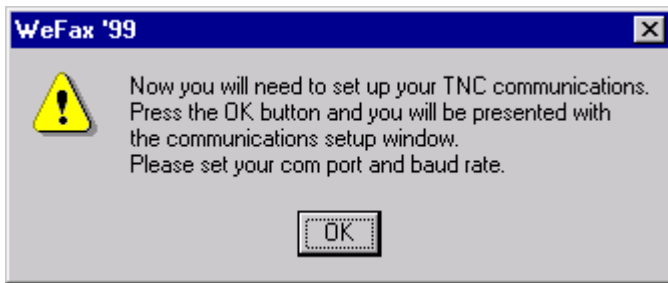
After you have run the installation program, you are ready to start using WeFax for Windows. There are two easy ways to start WeFax for Windows:

- 7) The first way to start WeFax for Windows is to double click on the WeFax for Windows icon you chose to locate on your desktop during installation. This is what the icon looks like.

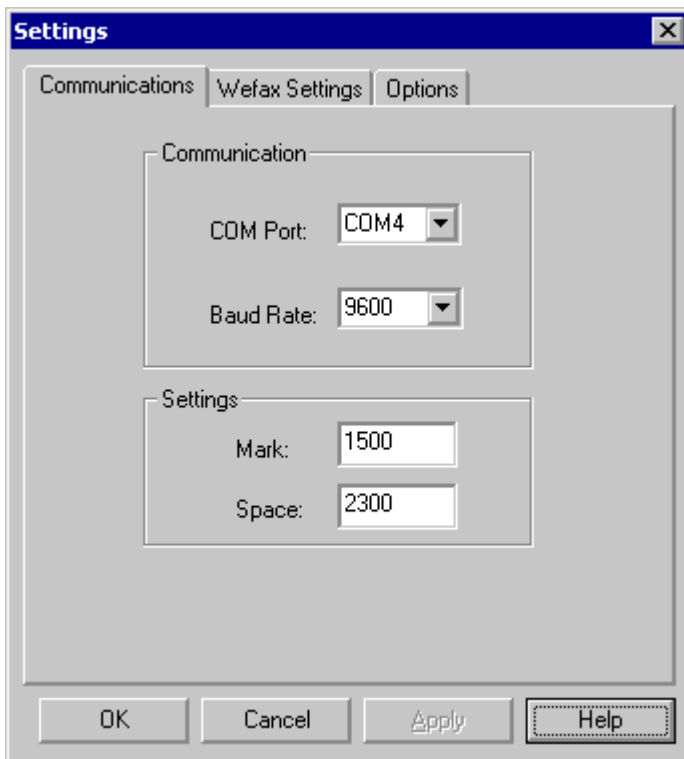


- 8) The second way to start WeFax for Windows is to click on the **Start** button. Following this go to **Programs**. Then the WeFax for Windows folder the click on WeFax for Windows.

The first time you start WeFax for Windows, you will receive the text box below, informing you that you need to set your TNC settings.

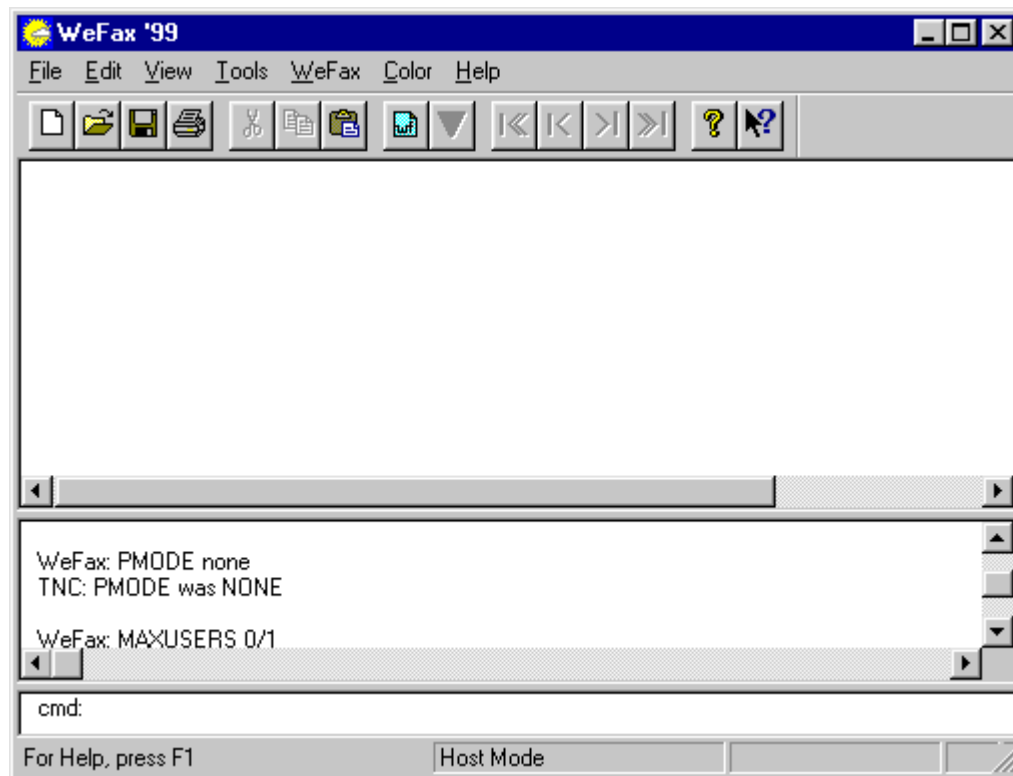


After clicking the **OK** button in the box above the communications setup window appears. This window allows you to modify your current communications settings. You will need to set the COM port where your TNC is connected and the baud rate of the TNC. If you are not sure of the baud rate set in your TNC, type ABaud in HyperTerminal before opening WeFax for Windows.



## The WeFax Window

After starting WeFax for Window the following screen should have appeared in your monitor:



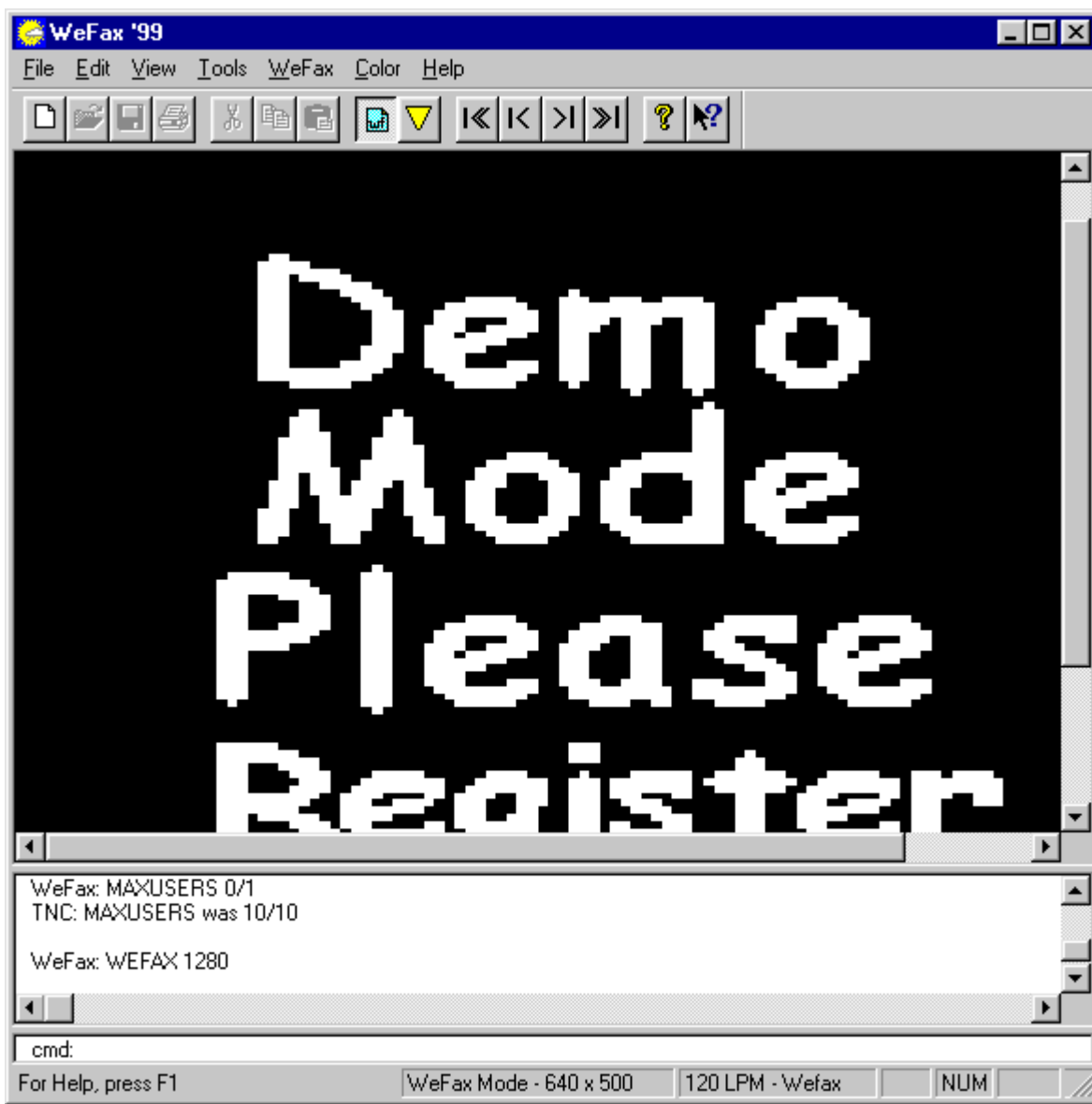
This is the main screen that you will use to receive WeFaxes. You can note the toolbar near the top of the screen, which gives you easy access to most of WeFax for Windows functions. Go to the Toolbar section for more information on the Toolbar. Below the Toolbar is your WeFax Receive window. Below that window is the Monitor window showing commands that have been issued to the TNC. The bottom window is the Command window where you can manually enter commands for the TNC.

Also at the top of the screen are the menu items. You can access everything in WeFax for Windows through the menus.

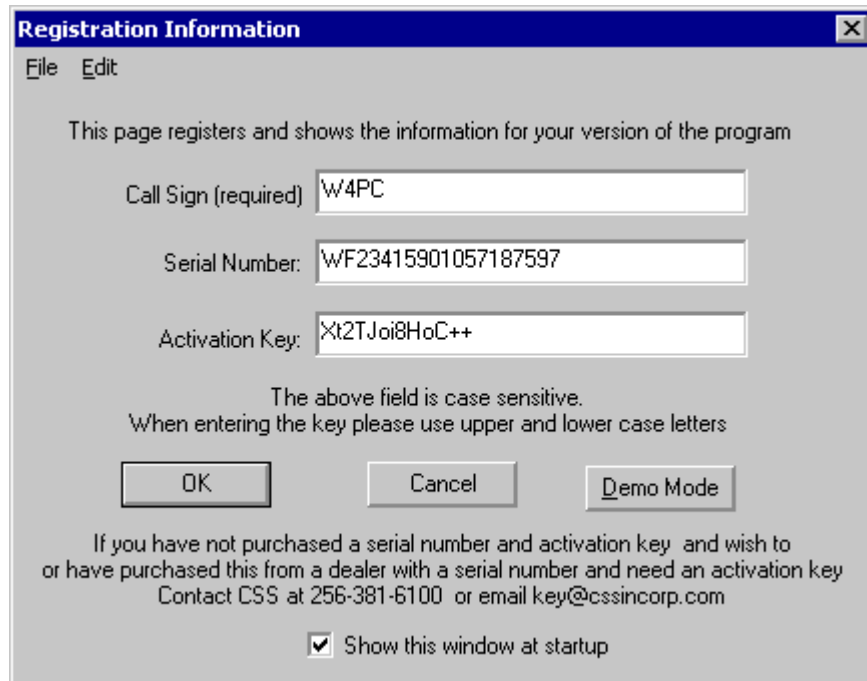


## Demo Mode

Demo Mode is a trial version of WeFax for Windows, which allows you to try WeFax for Windows before you purchase it. Some functionality has been taken out of Demo Mode. You will not be able to change the background and foreground colors or the font. The ability to cut, copy and paste text has been taken out in the unregistered version. Also you will not be able to print or save the bitmap after you have received it. Lastly, a box of text asking you to register your software will appear over the incoming WeFax. A picture of what you can expect is shown here.



Once you have purchased a serial number and activation key to activate all the features of WeFax for Windows, simply click on the Help menu and then choose Registration. You will then see a screen similar to the one below where you enter your call sign, serial number, and activation key.



The image shows a Windows-style dialog box titled "Registration Information". It has a menu bar with "File" and "Edit". The main text says "This page registers and shows the information for your version of the program". There are three text input fields: "Call Sign (required)" with the value "W4PC", "Serial Number:" with the value "WF23415901057187597", and "Activation Key:" with the value "Xt2TJoi8HoC++". Below these fields, a note states "The above field is case sensitive. When entering the key please use upper and lower case letters". At the bottom, there are three buttons: "OK", "Cancel", and "Demo Mode". Below the buttons, there is a paragraph of text: "If you have not purchased a serial number and activation key and wish to or have purchased this from a dealer with a serial number and need an activation key Contact CSS at 256-381-6100 or email key@cssincorp.com". At the very bottom, there is a checkbox labeled "Show this window at startup" which is checked.

Registration Information

File Edit

This page registers and shows the information for your version of the program

Call Sign (required) W4PC

Serial Number: WF23415901057187597

Activation Key: Xt2TJoi8HoC++

The above field is case sensitive.  
When entering the key please use upper and lower case letters

OK Cancel Demo Mode

If you have not purchased a serial number and activation key and wish to  
or have purchased this from a dealer with a serial number and need an activation key  
Contact CSS at 256-381-6100 or email key@cssincorp.com


☒ Show this window at startup

Simply type in your call sign, the serial number, and the activation key, and click **OK**. If you want to see the registration screen every time you start WeFax for Windows, click the box beside "Show this window at startup." You will then be able to enjoy WeFax for Windows with all its functionality. If you are only using WeFax for Windows in Demo Mode, type in your call sign and click the **Demo Mode** button.

## What is a WeFax

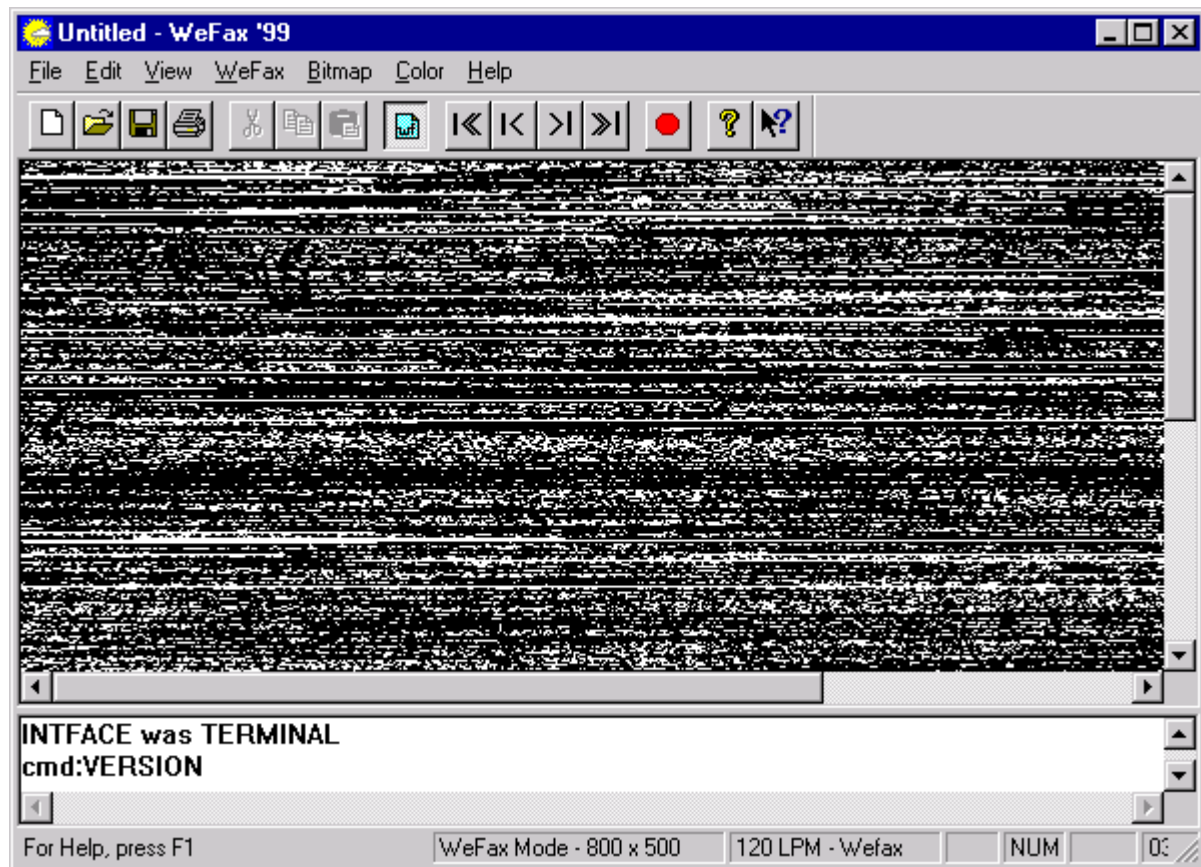
WeFax pictures, or weather faxes, are maps that contain a summary of weather conditions, showing such things as atmospheric pressure and surface temperatures over wide areas. Many of these maps show whole continents or oceans. The HF station that transmits them often produces these maps, but occasionally a HF station will receive satellite pictures and will transmit them over the HF bands.

## Tuning the Radio

To effectively utilize the facsimile capabilities of WeFax for Windows simply tune your radio to a Weather Fax transmitting station and then click on the WeFax toolbar button near the top of your WeFax for Windows screen . Once you have enabled the WeFax mode all you have to do is wait for your map to appear on your screen. There are over 50 Weather Fax transmitting stations around the world. Some of these stations are on a consistent transmission schedule and others broadcast irregularly.

The first thing you need to do is tune to a WeFax station. Because of limitations in the Kantronics TNCs, there will be no lights on the front of the TNC that will tell you when you are tuned correctly; you will have to tune manually. The WeFax Signal sounds like a RTTY signal so if you can tune those you shouldn't have too big of a problem. To start with, tune to the frequency as best you can. If you see more black than white on the incoming picture then you have tuned to high. If you see more white than black then you have tuned too low. Adjust accordingly until you reach an acceptable picture quality.

Here is an example of a WeFax picture from a poorly tuned or weak signal. This picture is an extreme but it will give you a general idea of what you don't want.



## Kantronic's TNCs and WeFax

Because the KAM sends WeFax data in a streaming format, detection of the start tones, stop tones, and sync tones must be done manually. This is a limitation of the firmware in the Kantronics TNCs and not WeFax for Windows.

To use WeFax for Windows you will need a Kantronics TNC with 5.0 firmware or better. The following TNCs support WeFax Mode: **KAM E, KPC-1, KPC-2, KPC-3, KPC-4, KAM Plus, KAM 98, KAM XL, and the KPC-2400.**

To receive WeFax you need to connect an audio cable from your receiver to the audio input of your TNC. For the KAMs this is the VHF port.

## Tech Support

If you need more information on Windows, please consult your Windows Help, available from the Windows Start button.

For telephone support call (256) 381-6135.

For Support by email write [support@cssincorp.com](mailto:support@cssincorp.com).

You can also check our web site for information. Our web site is <http://www.cssincorp.com>.

Email problems with WeFax for Windows documentation to [docmaster@cssincorp.com](mailto:docmaster@cssincorp.com).

If you need more information on your TNC, please consult your TNC Owners Manual.

# WeFax for Windows Menus

## File Menu

### File Menu Options




The File Menu gives you access to file commands such as New, Open, Save, Save As, Print, and Send. It also allows you to access your program Settings and Exit the program.

## New

The New command opens up a blank bitmap to receive a WeFax. The size of this new bitmap is determined by the resolution set in the setting's screen. See WeFax Settings for more information. To open a new bitmap, click on the **File** menu and then choose **New**.


### Shortcuts:

Toolbar button: 

## Open

The Open command allows you to open an existing bitmap in your default bitmap viewer (for most Windows users this will be Microsoft Paint). To open an existing bitmap, click on the **File** menu and then choose **Open**.


### Shortcuts:

Toolbar button: 

## Save

The Save command allows you to save a WeFax once you are finished receiving it. It is best to pause or stop the transmission before you save it so that no new data will be coming onto the screen while you are saving. To save a bitmap, click on the **File** menu and then choose **Save**.

### Shortcuts:

Toolbar button: 


The Save As command is the same as save but it asks you to put in a name for the bitmap every time you click it and does not save over the existing bitmap of that name automatically.

To use the Save As command click on the **File** menu and then choose **Save As**. There is no button on the toolbar for Save As.

## Print

The Print command allows the user to print the bitmap that is in the WeFax window of WeFax for Windows. To print the bitmap, click on the **File** menu and then choose **Print**.

### Shortcuts:

Toolbar button: 

## Settings

The Settings option gives you access to the WeFax for Windows program settings for Communications settings, WeFax image settings, and WeFax program options.

## Communication Settings



The Communications Settings allow you to change the Communications port (COM port) where the TNC is connected to the computer. It also allows you to change the TNC Baud Rate setting.

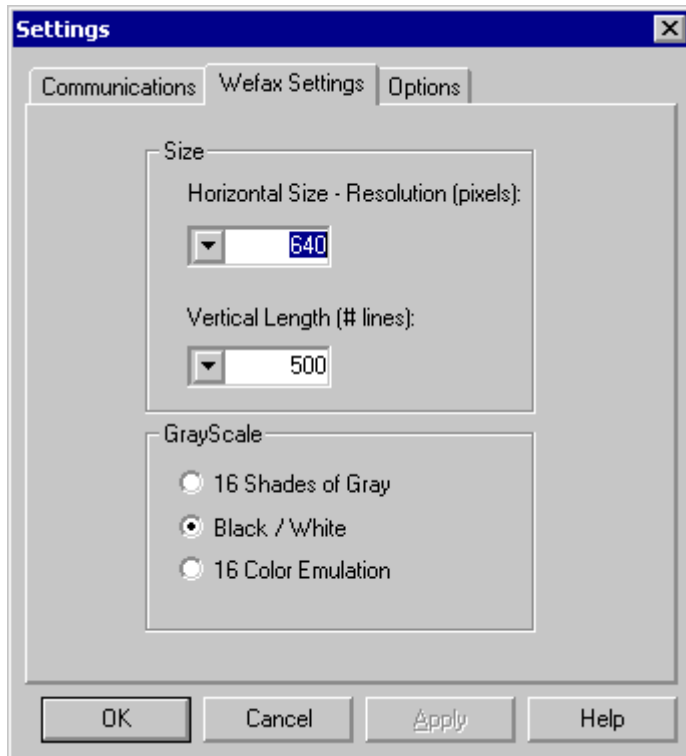
The baud rate tells WeFax for Windows what the baud rate is on the TNC. The baud rate on the TNC and the WeFax for Windows must match. To change the baud rate on your TNC you must use the 'Abaud' command (without the quotes) and then change the baud rate for WeFax for Windows to match the new baud rate in your TNC.

**WARNING: WeFax for Windows may not start properly if the baud rate of the TNC does not match the baud rate in the Settings screen.**

The Communications Settings screen also allows you to change your Mark and Space.

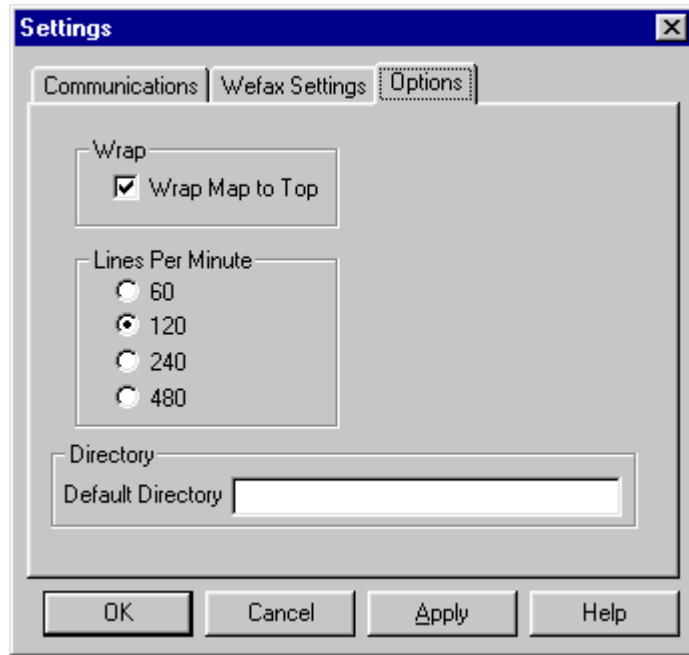


## WeFax Settings



The WeFax Settings window allows you to change the length and width of the received picture. This dictates the file size of the finished bitmap when you save your picture. The larger the selection on this screen, the larger your saved file will be. You also have the option with the KAM '98 to receive WeFax in 16 shades of gray, 16 colors, or black and white.

## Option Settings



The Options window allows you to change optional settings for WeFax.

**Wrap** - Allows a WeFax to wrap back to the top of the picture when a incoming picture reaches the maximum lines you set in the WeFax settings. If not checked, WeFax for Windows stops displaying the picture when max lines is reached.

**Lines Per Minute** - Allows you to adjust the lines per minute to receive different types of images.

**Default Directory** - Allows users to set a directory to store saved bitmaps.

## Send

After you have received a WeFax you can click on the File menu and then choose Send to send the picture as an attachment to an e-mail. This command will automatically use your default mail client (i.e. Internet Mail, Outlook, Outlook Express, Eudora, or Netscape Mail).

## Exit

The Exit command closes WeFax for Windows. Use this command when you are finished with everything you wish to do. WeFax for Windows does not ask you if you want to save the open Bitmap at the time you quit.

WeFax for Windows automatically sets the Maxusers to 10 for 1 port TNCs and 10/10 for 2 port TNCs on exit. And if you have the menu option checked to Return to Terminal Mode on Exit, WeFax for Windows will return your TNC to Terminal Mode.

## Edit Menu

### Edit Menu Options



The Edit menu allows you to Cut, Copy, and Paste material in WeFax and also allows you to Undo any changes.

## Undo

Undo allows you to undo the last change you made. For instance if you pasted a sentence into the terminal window but you put it in the wrong place, you could Undo it instead of deleting it. To Undo something click on the **Edit** menu and then choose **Undo**.


### Shortcuts:

Key Combination: <**Ctrl-Z**>

## Cut

The Cut command will cut out a highlighted area and place it in the clipboard so you can paste it later. To cut a selected area of highlighted text, click on the **Edit** menu and then choose **Cut**.

### Shortcuts:


Toolbar button: 

Key combination: <**Ctrl-X**>

## Copy

The Copy command will copy a highlighted area and place it in the clipboard so you can paste it later. To copy a selected area of highlighted text, click on the **Edit** menu and then choose **Copy**.

### Shortcuts


Toolbar button: 

Key combination: <**Ctrl-C**>

## Paste

The Paste command will place the contents of the clipboard into the terminal window of WeFax for Windows wherever the cursor is flashing. To paste to the terminal window, click on the **Edit** menu and then choose **Paste**.

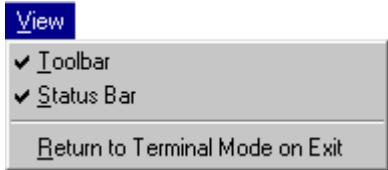
### Shortcuts

Toolbar button: 

Key combination: <**Ctrl-X**>

## View Menu

### View Menu Options




The View menu allows you to customize the appearance of WeFax for Windows. You can select whether to view the Toolbar or Status Bar. You can also select an option to Return to Terminal Mode when you exit WeFax for Windows.


### Toolbar


In the View menu at the top of the WeFax window you can click on the Toolbar selection to remove the toolbar from the screen. To add it later just click on the View menu again and reselect Toolbar so that a check mark appears beside Toolbar.





This is the WeFax for Windows Toolbar. This selection of buttons puts the majority of WeFax for Windows menu options at your fingertips. Moving your mouse pointer over each button in the program will give you the name of each one.

 The **New** button prepares to receive a new WeFax picture. NOTE: As of this Preview, when you click on the New button the program will not ask you to save your existing picture. This will be changed in future releases.

 The **Open** button opens an existing bitmap. NOTE: This command opens the bitmap in Microsoft Paint, which comes standard with Windows 95, 98, ME, NT, 2000, and XP.

 The **Save** button allows you to save a WeFax picture to your computer.

 The **Cut** button cuts out any highlighted text and places it in the Windows clipboard.

 The **Copy** button makes a duplicate copy of the highlighted text and places the copy on the

clipboard.



**Paste** allows you to place any text that is in the clipboard on to a selected area on the Terminal window.



The **WeFax** button starts and stops receiving a WeFax Transmission. Make sure that your radio is tuned to the proper station before you begin receiving the image or you will only be receiving noise. You will know that you are not tuned in properly when your picture begins to look like a still picture of a television set with ‘snow’ on it.



The **Pause** button pauses receiving the WeFax picture. The picture continues to be processed in the background, but the picture stops coming onto the screen. Because the program continues to process the signal from the radio, when you unpauses WeFax, the picture will automatically be updated with the picture that was received while the program was paused. This can be a problem if you hold the WeFax paused too long. Because the TNCs only have a finite buffer in which to hold data, if you keep the WeFax paused too long then you may lose some of the data when you unpauses it. The pause function is useful to use before you save or print an incoming bitmap. When a picture is finished, pause the transmission and save or print your bitmap. If you fail to do this then the repeated fax may overwrite the completed picture.



The **Sync Left 10 Pixels** button moves the sync line to the left 10 Pixels.



The **Sync Left** button moves the sync line to the left 1 pixel



The **Sync Right** button moves the sync line to the right 1 pixel



The **Sync Right 10 Pixels** button moves the sync line to the right 10 pixels

\*The sync line represents the left side of the WeFax. The ability to move this line left or right allows you to center the picture on different places on the incoming transmission.

## Status Bar

In the View menu at the top of the WeFax window you can click on the Status Bar selection to remove the status bar from the screen. To add it later just click on the View menu again and reselect Status Bar to put a check mark beside Status Bar.



On the left part of the Status Bar, it will tell you what you have your mouse pointer over. For instance, if you had it over the Cut Button on the toolbar, it would tell you that it was the cut

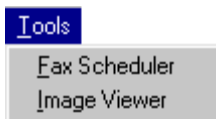
command. The Status Bar also let's you know the time and whether you have the Num Lock, Caps Lock or Scroll Lock on. The Status Bar also tells you what mode you're in (Terminal or Host Mode) and the Dimensions in WeFax mode.

## Return to Terminal Mode on Exit

Putting a check mark beside this option causes WeFax for Windows to put your TNC in Terminal Mode when you exit the program. If it is not checked, the TNC remains in Host Mode.

## Tools Menu

### Tools Menu Options



The Tools menu allows you to access the Fax Scheduler and the Image Viewer.

### Fax Scheduler

This command allows you to set a predetermined schedule to download Weather Faxes. You should see a window that looks like this on your screen.

**Fax Schedule**

Fax Scheduler allows you to automatically receive faxes while away from the computer.

Enable schedule	Once	Hourly	Daily	Date	Start Time	Stop Time
<input checked="" type="checkbox"/>	<input checked="" type="radio"/>	<input type="radio"/>	<input type="radio"/>	11/12/99	14:51	14:52
<input type="checkbox"/>	<input type="radio"/>	<input type="radio"/>	<input type="radio"/>	10/ 6/99	00:00	01:00
<input type="checkbox"/>	<input type="radio"/>	<input type="radio"/>	<input type="radio"/>	10/ 6/99	00:00	01:00
<input type="checkbox"/>	<input type="radio"/>	<input type="radio"/>	<input type="radio"/>	10/ 6/99	00:00	01:00
<input type="checkbox"/>	<input type="radio"/>	<input type="radio"/>	<input type="radio"/>	10/ 6/99	00:00	01:00
<input type="checkbox"/>	<input type="radio"/>	<input type="radio"/>	<input type="radio"/>	10/ 6/99	00:00	01:00
<input type="checkbox"/>	<input type="radio"/>	<input type="radio"/>	<input type="radio"/>	10/ 6/99	00:00	01:00
<input type="checkbox"/>	<input type="radio"/>	<input type="radio"/>	<input type="radio"/>	10/ 6/99	00:00	01:00
<input type="checkbox"/>	<input type="radio"/>	<input type="radio"/>	<input type="radio"/>	10/ 6/99	00:00	01:00
<input type="checkbox"/>	<input type="radio"/>	<input type="radio"/>	<input type="radio"/>	10/ 6/99	00:00	01:00

Auto-save to Directory

OK Cancel

You can set up to 10 schedules at a time for WeFax for Windows to remember. In order for the scheduler to work you must keep WeFax for Windows running. With the scheduler you just set the time that a transmission is set to commence and WeFax for Windows will automatically switch to WeFax mode when that time arrives and switch off at the time you specified to stop.

Next to each schedule is a box. Just click in the box to activate that schedule. Once active you may choose if you want to automatically receive a WeFax Once, Hourly, or Daily. If you choose 'Once' then the Scheduler will only receive the WeFax one time and then stop. If you choose 'Hourly' then it will automatically start and stop on the Date and Time that you have set and will reset itself to the next Hour from the start time. So after the transmission is received it will increment both the start and stop times by one hour. If you choose 'Daily' then the Start and Stop time will begin as you set and when it is finished it will increment the Day by one.

**AutoSave Default Directory** – This allows you to set the directory that the Fax Scheduler saves the received weather Facsimiles into when the stop time has been reached. The file name that the received WeFax is saved as is made up of the month, day, hour and minute of the start time. For

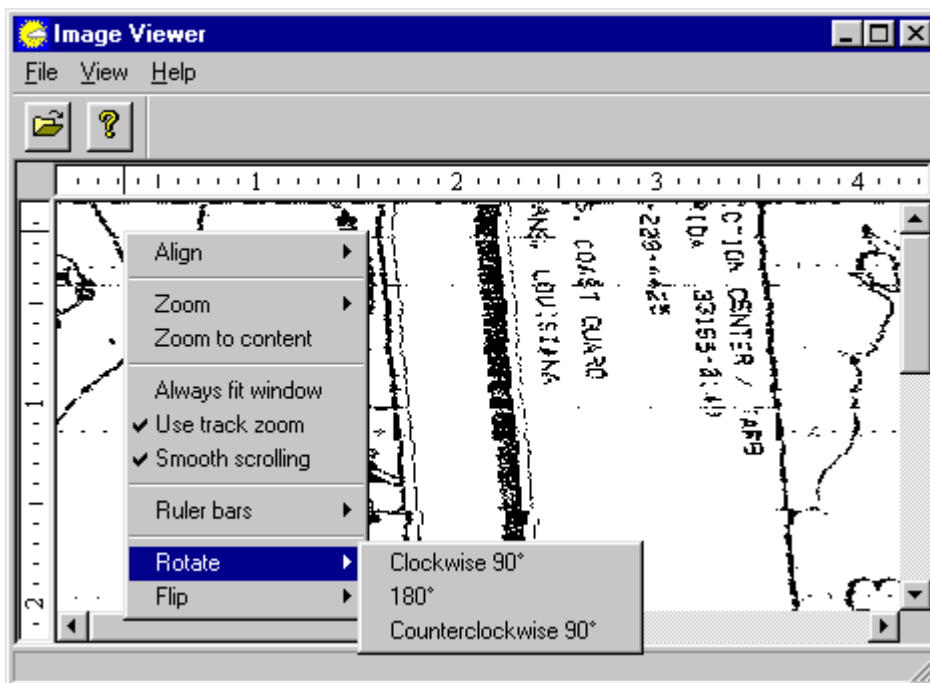


example if you started a reception on December 1<sup>st</sup>, 1999 at 12:45 UTC then the filename would be 12m1d12h45.bmp

**NOTE: IF YOU USE THE SCHEDULER THEN YOU WILL WANT TO UNCHECK THE 'WRAP TO TOP' OPTION IN THE OPTIONS SETTINGS WINDOW. THIS WILL PREVENT THE PROGRAM FROM COPYING OVER THE RECEIVED TRANSMISSION IF YOU SET THE STOP TIME FOR LONGER THAN IT TAKES TO RECEIVE THE TRANSMISSION.**

## Image Viewer

The Image Viewer allows you to view a received WeFax in an environment where you can Zoom, Rotate, Flip and otherwise manipulate the picture. If you have already received a picture in WeFax for Windows and it is on your screen then simply click on **Tools** and then choose **Image Viewer** and it will open the current picture in the Image Viewer. If you have already saved the image and simply want to view it again, open up Image Viewer the same way as above. You should see the following screen.



Simply click on the **File** menu then **Open** and choose the bitmap you want to view.

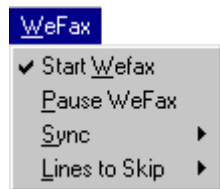
All commands in the Image Viewer are accessed through the right mouse click menu (see the picture above for an example). From the right-click menu you can Zoom in and out of the bitmap,

Rotate it 90 degrees or 180 degrees in both clockwise and counter-clockwise directions. You can also Flip the image along its vertical or horizontal axis. You also can change the alignment so it is shown on the left, center, or right side of the window.

**WARNING: IF YOU HAVE A CHECK MARK NEXT TO 'FIT TO SCREEN' THEN YOU WILL NOT BE ABLE TO ZOOM IN OR OUT. SIMPLY UNCHECK THE BOX TO BE ABLE TO ZOOM AGAIN.**

## WeFax Menu

### WeFax Menu Options



The WeFax menu gives you options for controlling WeFax picture reception. Options include Start WeFax, Pause WeFax, Sync, and Lines to Skip.

### Start WeFax



Start WeFax signals WeFax for Windows to begin receiving a Weather Facsimile. Make sure that your radio is tuned to the proper station before you begin receiving the image or you will only be receiving noise. You will know that you are not tuned in properly when your picture begins to look like a still picture of a television set with 'snow' on it.

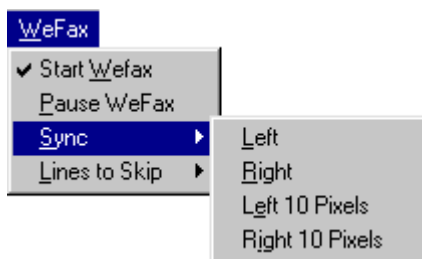
### Pause WeFax



This command will pause the incoming WeFax. Remember though that this only pauses the

display. The signal will still be transmitting at the originating station. While it is paused the picture continues to be processed in the background, but the picture stops coming onto the screen. Because the program continues to process the signal from the radio, when you unpause WeFax, the picture will automatically be updated with the picture that was received while the program was paused. This can be a problem if you hold the WeFax paused too long. Because the TNCs only have a finite buffer in which to hold data, if you keep the WeFax paused too long then you may lose some of the data when you unpause it. The Pause function is useful to use before you save or print an incoming bitmap. When a picture is finished, pause the transmission and save or print your bitmap. If you fail to do this then the repeated fax may overwrite the completed picture.

## Sync



**Sync Left** - This command moves the Sync line to the left one (1) pixel.

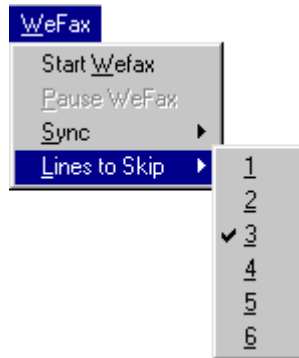
**Sync Right** - This command moves the Sync line to the right one (1) pixel.

**Sync Left 10 Pixels** - This command moves the Sync line to the left ten (10) pixels.

**Sync Right 10 Pixels** - This command moves the Sync line to the right ten (10) pixels.

\*The sync line represents the left side of the WeFax. The ability to move this line left or right allows you to center the picture on different places on the incoming transmission.

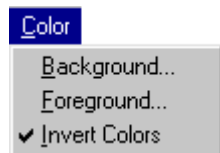
## Lines to skip



The Lines to Skip option increases or decreases the resolution of the picture. Increasing the number of Lines to Skip decreases the resolution. Decreasing the number of Lines to Skip increases the resolution.

## Color Menu

### Color Menu Options



The Color Menu allows you to change the Background color and Foreground color and allows you to Invert the Background and Foreground Colors.

### Background Color

This allows you to select the Background Color for your bitmap. The following screen will appear. Simply choose your color and click the **OK** button.



## Foreground Color

This allows you to select the foreground color for your bitmap. The following screen will appear. Simply choose your color and click the **OK** button.

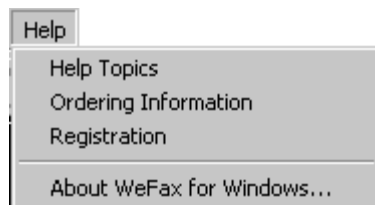


## Invert Colors

This command allows you to invert your Background and Foreground colors. For instance if your background color was white and the foreground was black then by inverting the colors, the background would be black and the foreground would be white. Colors are inverted when a check mark appears beside the **Invert Colors** option on the **Color** menu.

## Help Menu

### Help Menu Options



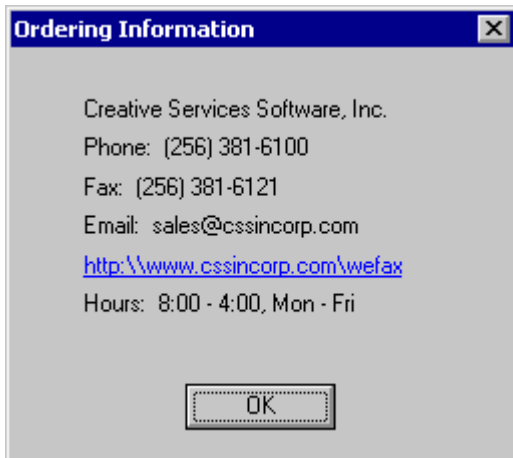
The Help menu gives you access to the WeFax for Windows Help Topics, Ordering Information, the Registration screen, and the About WeFax box.

## Help Topics

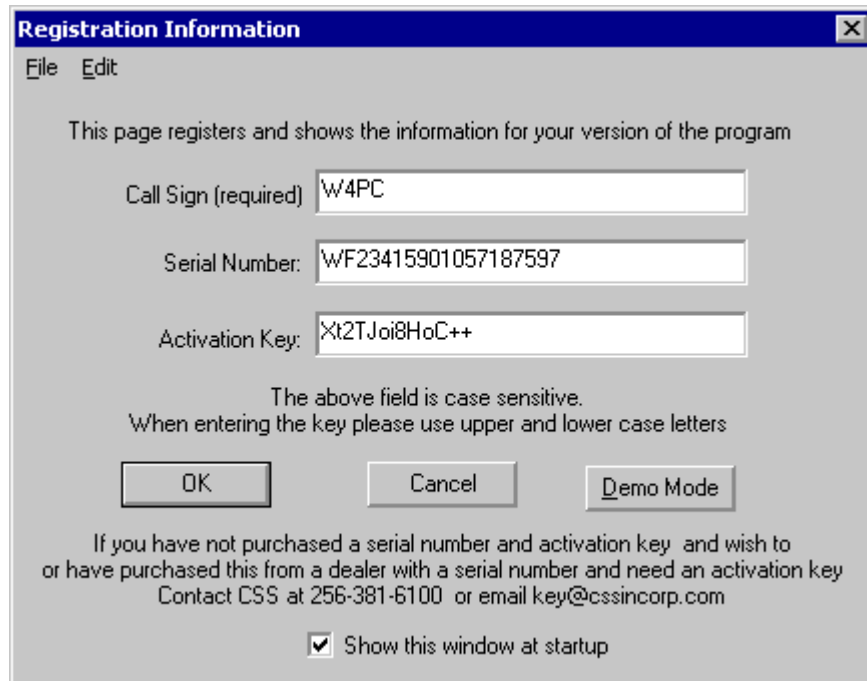
This command brings up this help file.

## Ordering Information

Selecting this option brings up a dialog box that gives you contact information for questions about ordering WeFax for Windows.



## Registration



The image shows a Windows-style dialog box titled "Registration Information". It has a menu bar with "File" and "Edit". The main text says "This page registers and shows the information for your version of the program". There are three text input fields: "Call Sign (required)" with the value "W4PC", "Serial Number:" with the value "WF23415901057187597", and "Activation Key:" with the value "Xt2TJoi8HoC++". Below these fields is a note: "The above field is case sensitive. When entering the key please use upper and lower case letters". At the bottom, there are three buttons: "OK", "Cancel", and "Demo Mode". Below the buttons is a paragraph of text: "If you have not purchased a serial number and activation key and wish to or have purchased this from a dealer with a serial number and need an activation key Contact CSS at 256-381-6100 or email key@cssincorp.com". At the very bottom, there is a checkbox labeled "Show this window at startup" which is checked.

**Registration Information**

File Edit

This page registers and shows the information for your version of the program

Call Sign (required) W4PC

Serial Number: WF23415901057187597

Activation Key: Xt2TJoi8HoC++

The above field is case sensitive.  
When entering the key please use upper and lower case letters

OK Cancel Demo Mode

If you have not purchased a serial number and activation key and wish to  
or have purchased this from a dealer with a serial number and need an activation key  
Contact CSS at 256-381-6100 or email key@cssincorp.com

☒ Show this window at startup

This is where you will register your copy of WeFax for Windows. By registering the copy, you gain access to features not available in Demo Mode. Enter your Call Sign, Serial Number, and Activation Key in the appropriate boxes and click the **OK** button to save the Registration information. If you want to run WeFax for Windows in Demo Mode, enter your Call Sign and click the **Demo Mode** button. For more on Demo Mode, see the Demo Mode topic. If you want the Registration Screen to appear every time you start WeFax for Windows, make sure there is check mark beside “Show this window at startup” and click **OK**. To keep the Registration Screen from appearing every time, remove the check mark and click **OK**.

## About WeFax for Windows

The “About WeFax for Windows” box gives you copyright information as well as the version of WeFax for Windows, the TNC you are using, and the TNC’s firmware version.





# Index

## A

About WeFax '99 28

## B

Background Color 24

Baud rate 12

Buying WeFax 27

## C

Color Menu 24

COM port 12

Communication Settings 12

Copy 16, 17

Cut 16, 17

## D

Default Directory 14

Demo Mode 5, 6, 28

## E

Edit Menu 15

Exit 15

## F

Fax Scheduler 19

File Menu 10

Firmware 28

Flip 21, 22

ForeGround Color 25

## G

Gray scale 13

## H

Help Menu 27

Help Topics 27

## I

Image Viewer 21

Installation of WeFax'99 1

Introduction to WeFax '99 1

Invert Colors 26

## K

Kantronic's TNCs and WeFax 8

## **L**

Lines Per Minute 14  
Lines to skip 24

## **M**

Mark 12  
Maxusers 15

## **N**

New 10, 17

## **O**

Open 10, 17  
Option Settings 14  
Ordering Information 27

## **P**

Paste 16, 17  
Pause 17, 22  
Pause Wefax 22  
Print 11, 18  
Purchasing Information 27

## **R**

Radio 7  
receiving 22  
Registration 28  
Return to Terminal Mode on Exit 15, 19

## **S**

Save 11, 17, 18  
Save As 11  
Scheduler 20, 21  
Send 14  
Set Schedule 19  
Settings 11, 12, 13, 14  
Size 13  
skip 24  
Space 12  
Start Wefax 22  
Starting WeFax '99 2, 4  
Status Bar 18, 19  
Support 9  
Sync 8, 18, 23

## **T**

Tech Support 9  
Terminal Mode on Exit 15, 19  
The WeFax Window 4  
TNCs 1, 8  
Toolbar 17  
Tools Menu 19  
Tuning the Radio 7

## **U**

Undo 15

## **V**

Version 28

View Menu 17

## **W**

Weather fax 6

Wefax 6

WeFax Menu 22

Wefax Settings 13

WeFax Signal 7

Welcome 1

What is a Wefax 6

Wrap 14

## **Z**

Zoom 21, 22